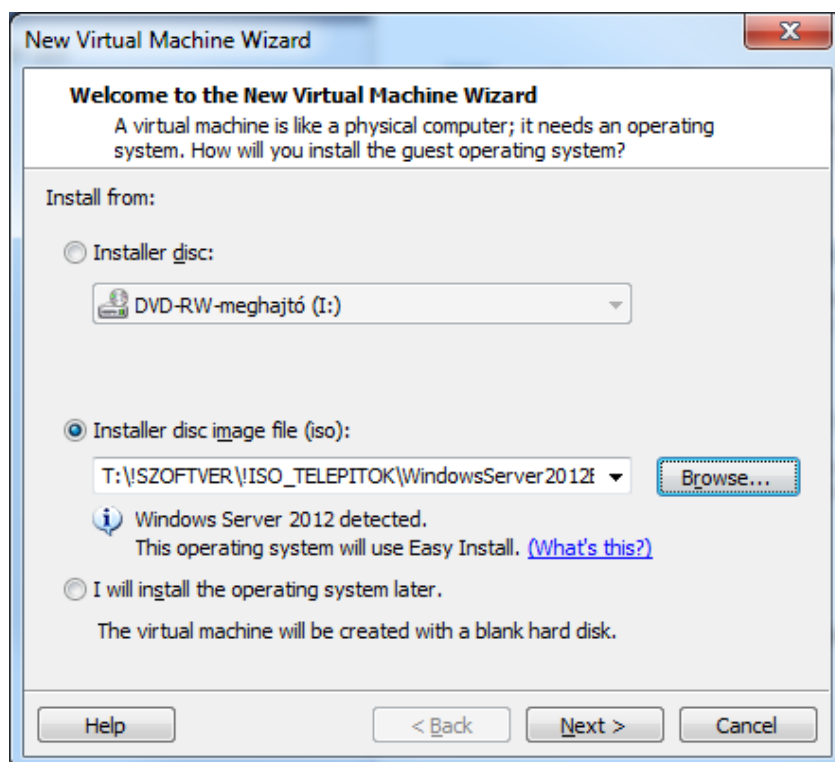


Windows hálózati adminisztráció gyakorlat

Dr. Johanyák Zsolt Csaba

<http://johanyak.hu>

Windows Server 2012 Essentials telepítése VMware playerbe



New Virtual Machine Wizard

Easy Install Information
This is used to install Windows Server 2012.

Windows product key
HHRHF - YMNJK - RPGCC - VV68K - BWMVY

Version of Windows to install
Windows Server 2012 Standard

Personalize Windows

Full name: hallgato

Password: (optional)

Confirm:

☐ Log on automatically (requires a password)

Help < Back Next > Cancel

Felhasználónév hallgato

Jelszó: Hallgato-9

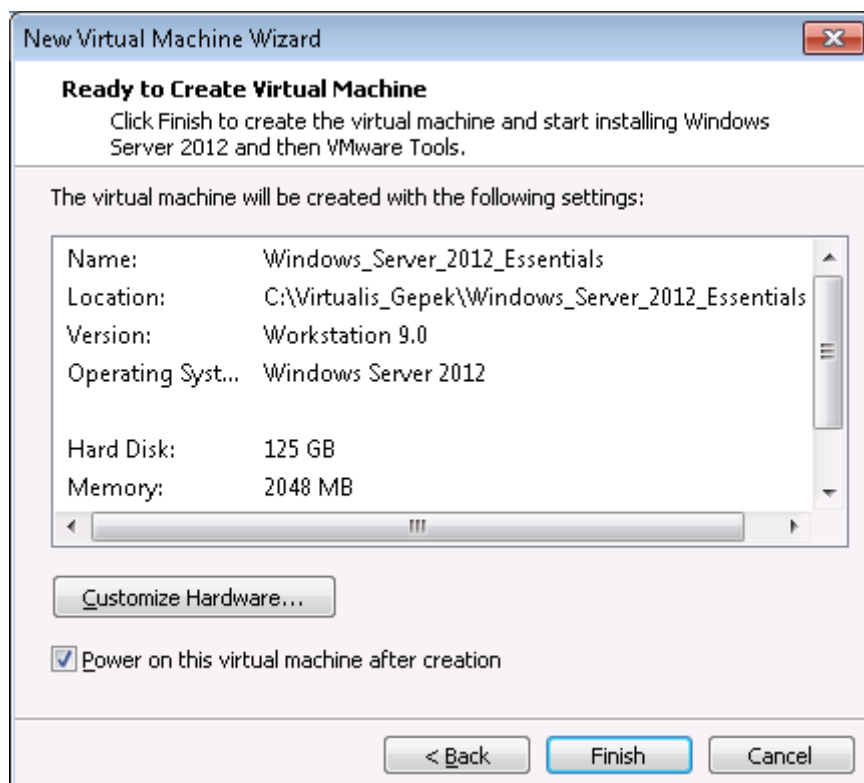
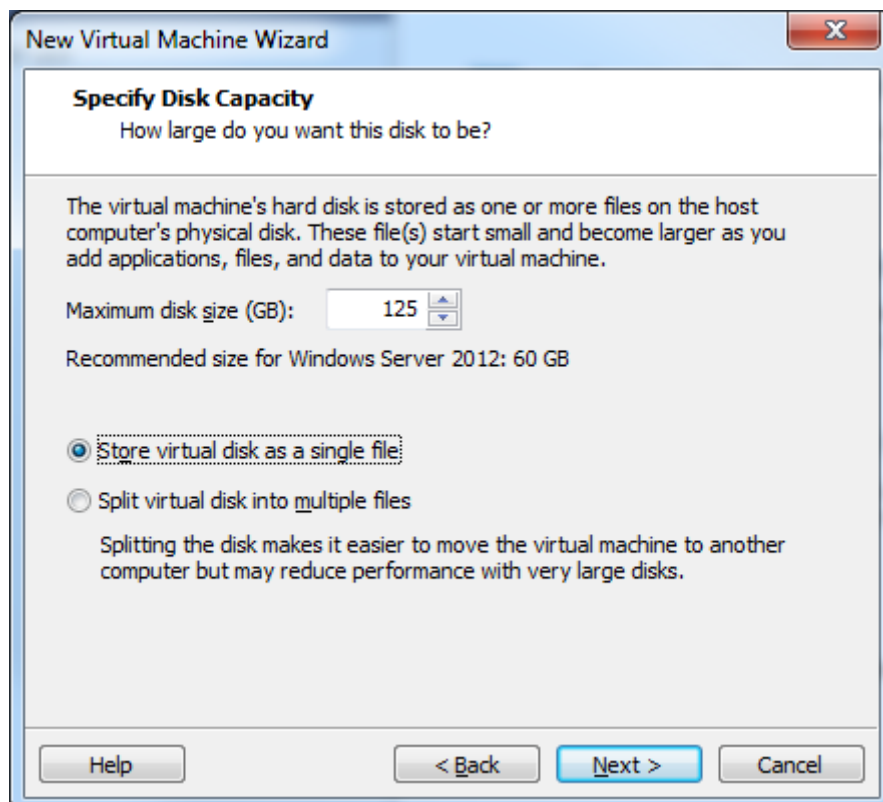
New Virtual Machine Wizard

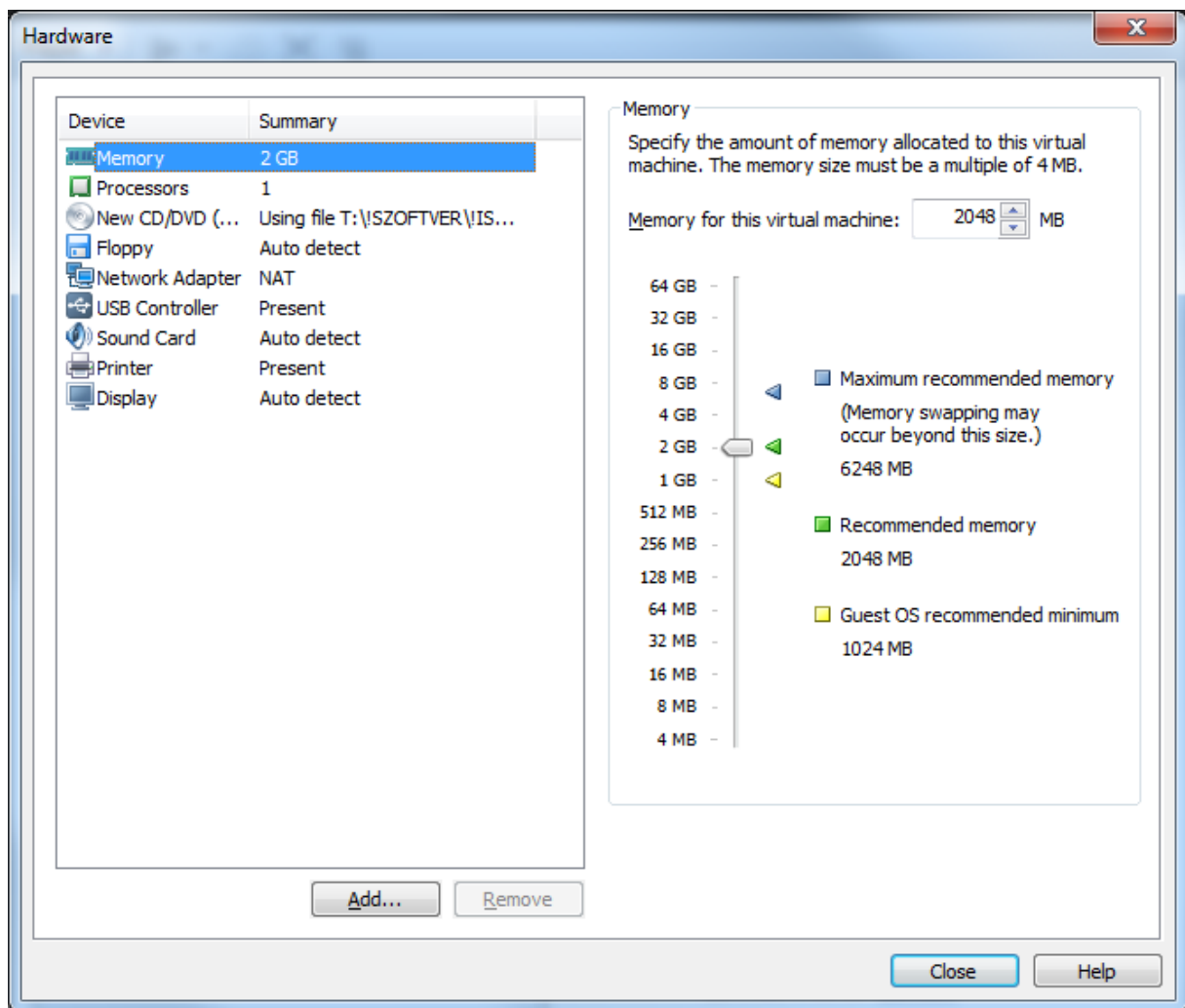
Name the Virtual Machine
What name would you like to use for this virtual machine?

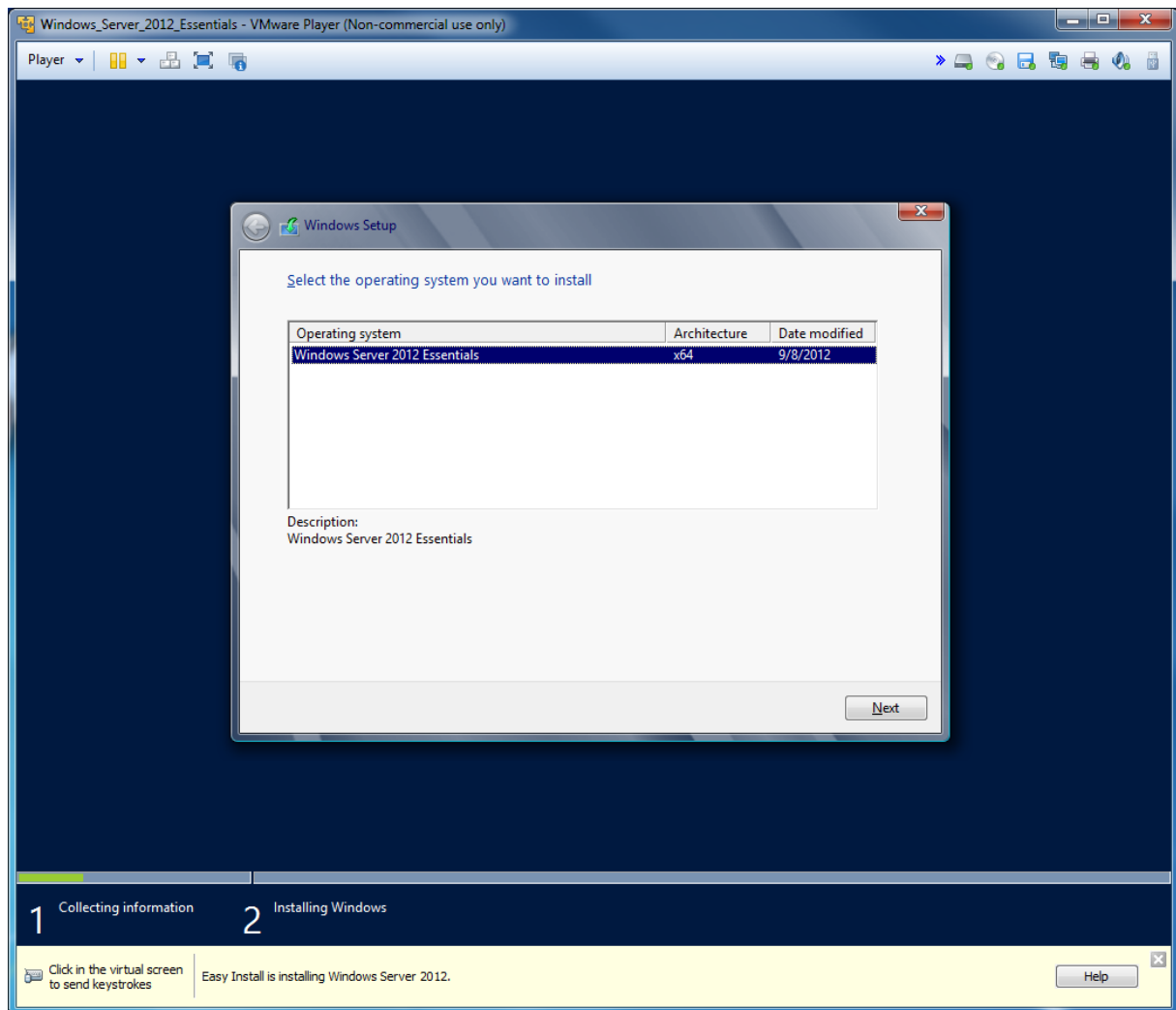
Virtual machine name:
Windows_Server_2012_Essentials

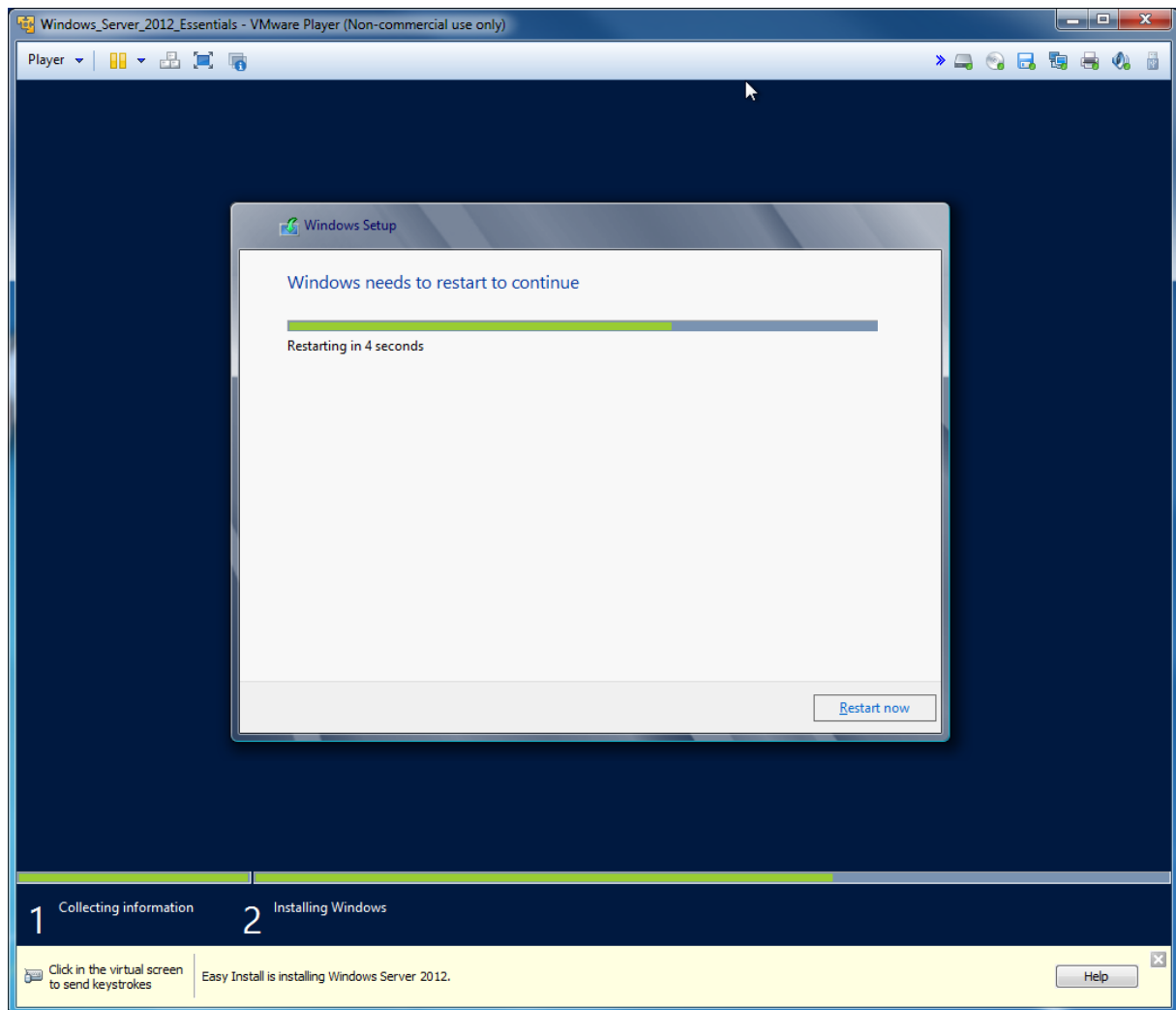
Location:
C:\Virtualis_Gepek\Windows_Server_2012_Essentials Browse...

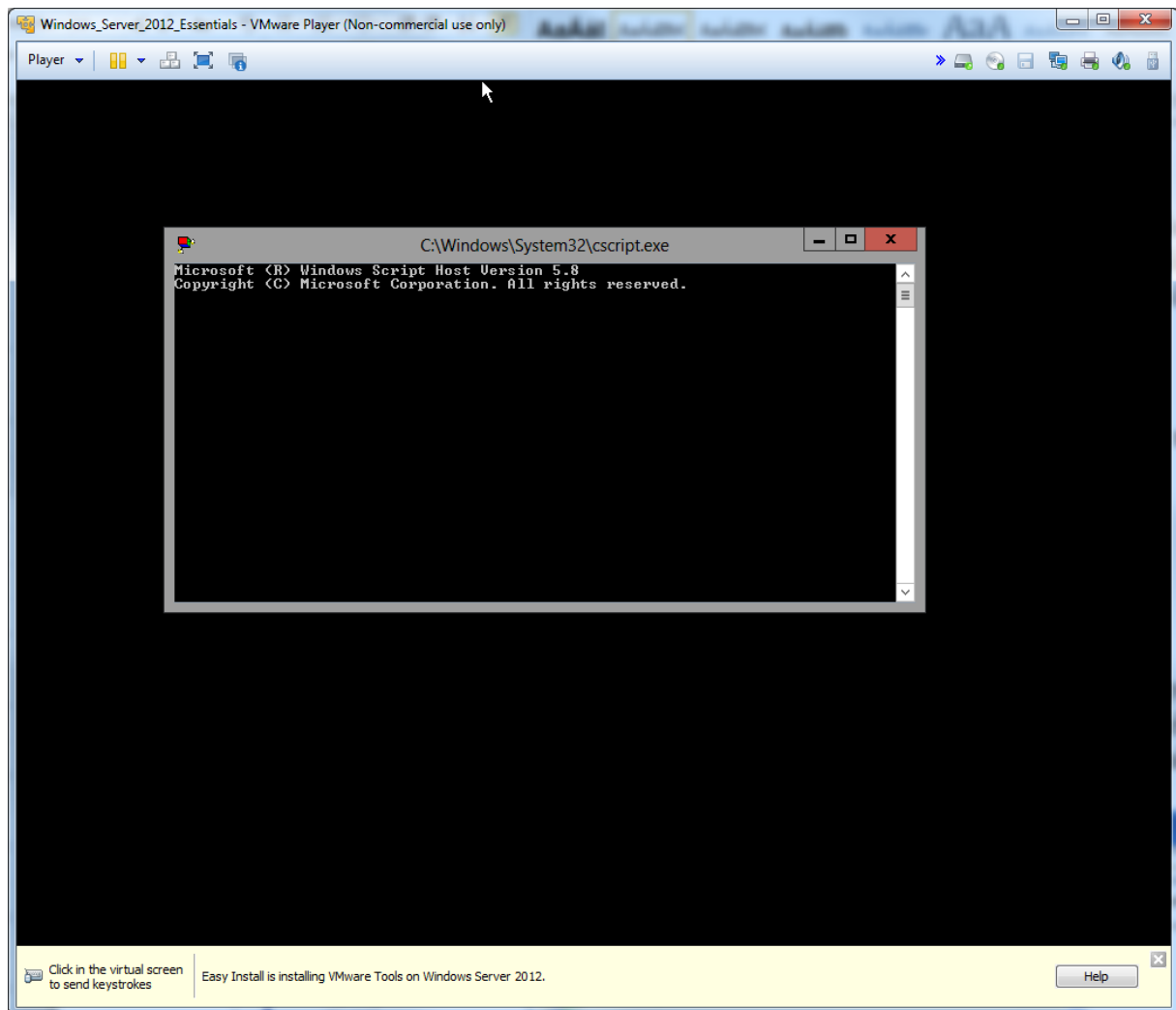
< Back Next > Cancel

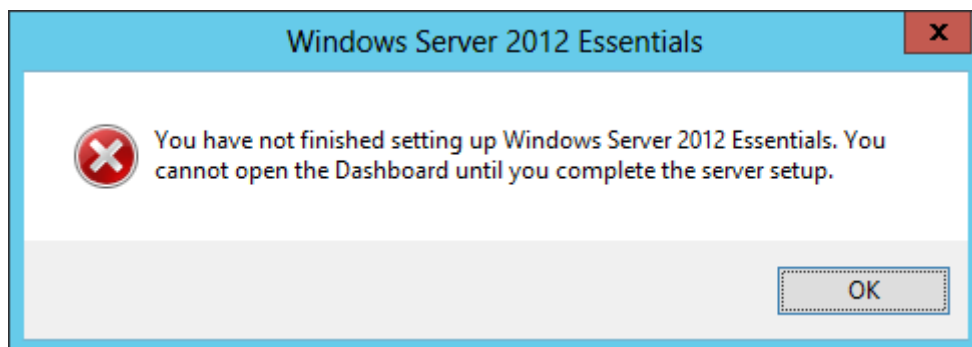
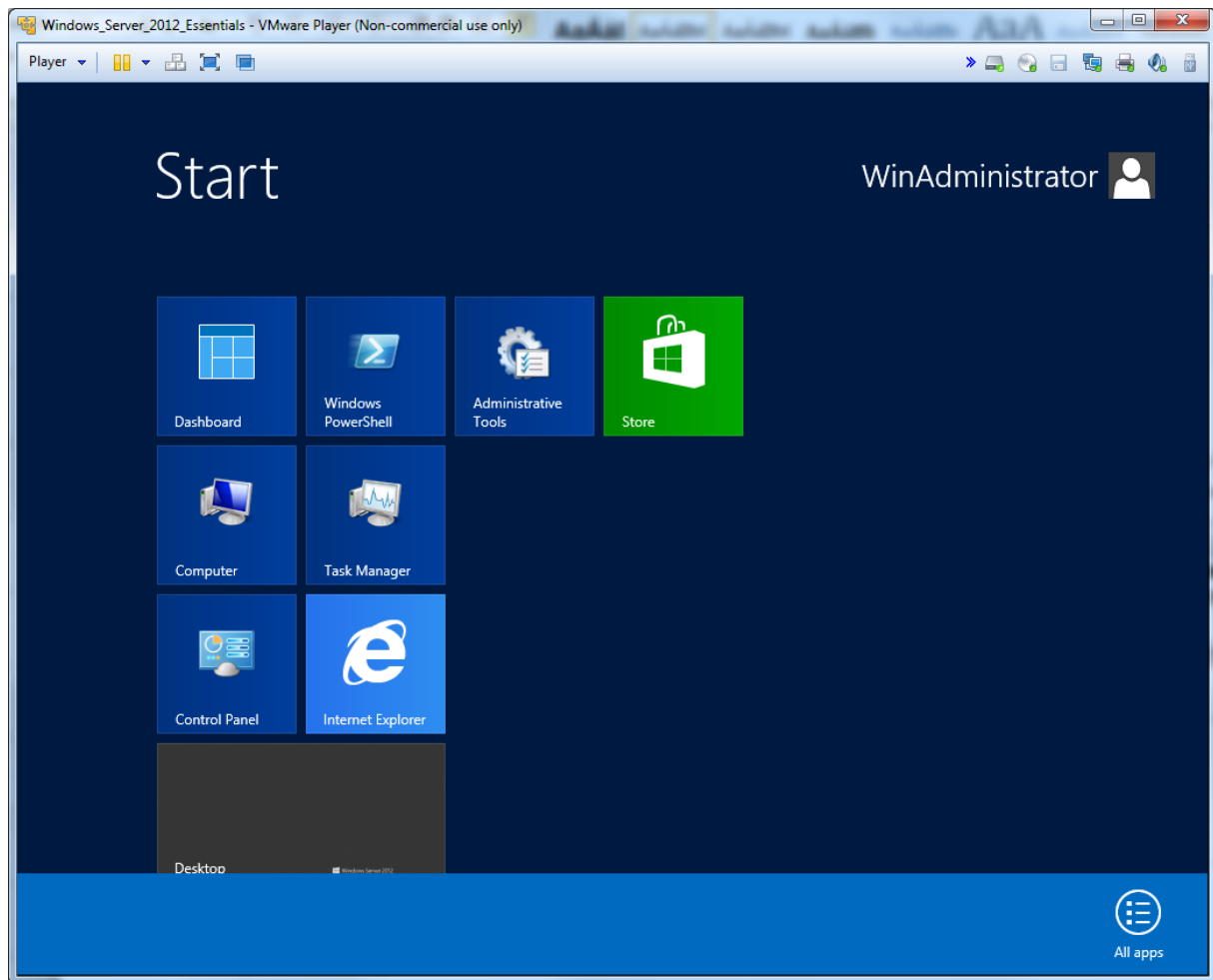






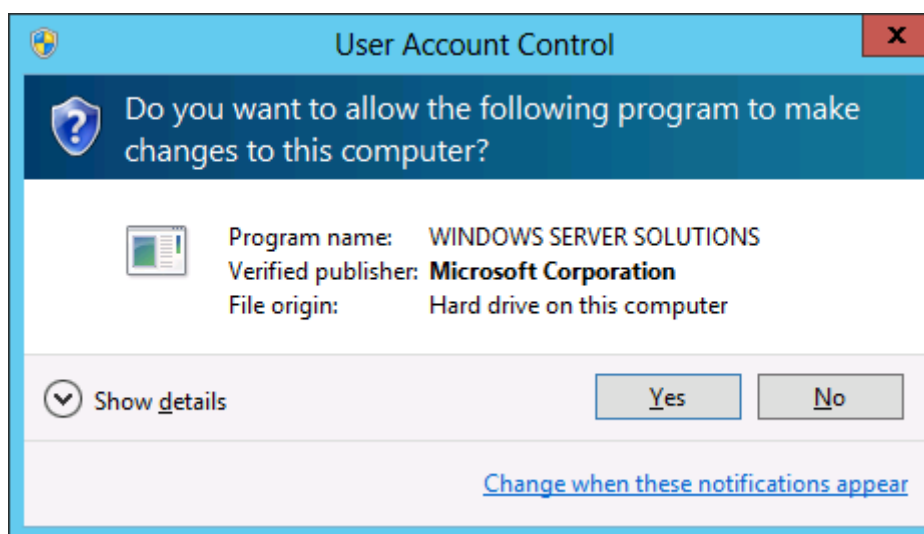
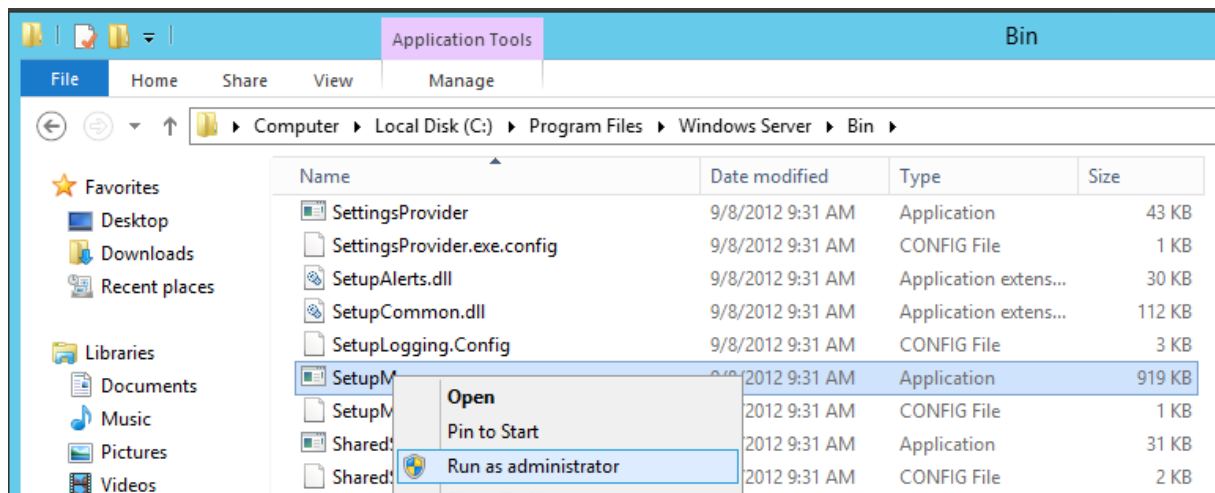






Windows key + E

setupmon.exe located in "C:\Program Files\Windows Server\Bin" Run this file as **Administrator**



Verify the date and time settings

Ensure that the date, time, and time zone settings on your system clock are correct. This helps prevent potential connectivity problems between your server and your computers.

The server time is currently set to: Saturday, February 16, 2013 9:29:58 AM (UTC+01:00)

[Change system date and time settings](#)

[Why are the date and time settings important?](#)

Next

Choose server installation mode

Choose your preferred installation mode of Windows Server 2012 Essentials

Clean install

Choose this option if you do not have an existing Windows domain.

Server migration

Choose this option if you want to join this server to an existing Windows domain, and then install server applications.

[Learn more about Windows Server 2012 Essentials installation modes](#)

Back

Personalize your server

This information is used to distinguish your server on your network.

Company name:

Internal domain name:


(for example Contoso Co. might choose CONTOSO)

The internal domain name identifies your business network and users see this name when they log on to their computers. The internal domain name is not an Internet domain name, and is not visible outside your network.

Server name:

(for example Contoso Co. might choose ContosoServer)

The server name uniquely identifies your server on your network.

 These settings cannot be changed after your server is set up.

[What should I know before I personalize my server?](#)

[Back](#)

[Next](#)

Provide your administrator account information (account 1 of 2)

Use your administrator account to log on to your server to manage it. To help protect your network, you should use the administrator account only when you need to perform administrative tasks that require administrator privileges.

Administrator account name:

Password:

Confirm password:

[How do I choose this information?](#)

Hallgato-9

Provide your standard user account information (account 2 of 2)

To help protect your network, use your standard user account to log on to the network and to perform your normal daily tasks such as accessing shared folders. Use your administrator account only when you need to perform administrative tasks that require administrator privileges.

Standard user account name:

Password:

Confirm password:

[How do I choose this information?](#)

[Back](#)

[Next](#)

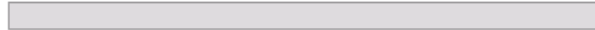
Hallgato-9

No update

Updating and preparing your server

That is all the information that you need to provide. Your server is being prepared for use and may restart more than once. This may take up to 30 minutes.

Preparing your server...



0 % complete



Do not turn off your server.

[Back](#)

Your server is now ready to be used



Next, at each computer in your network, browse to <http://W12SERVER/Connect> to connect it to your server.

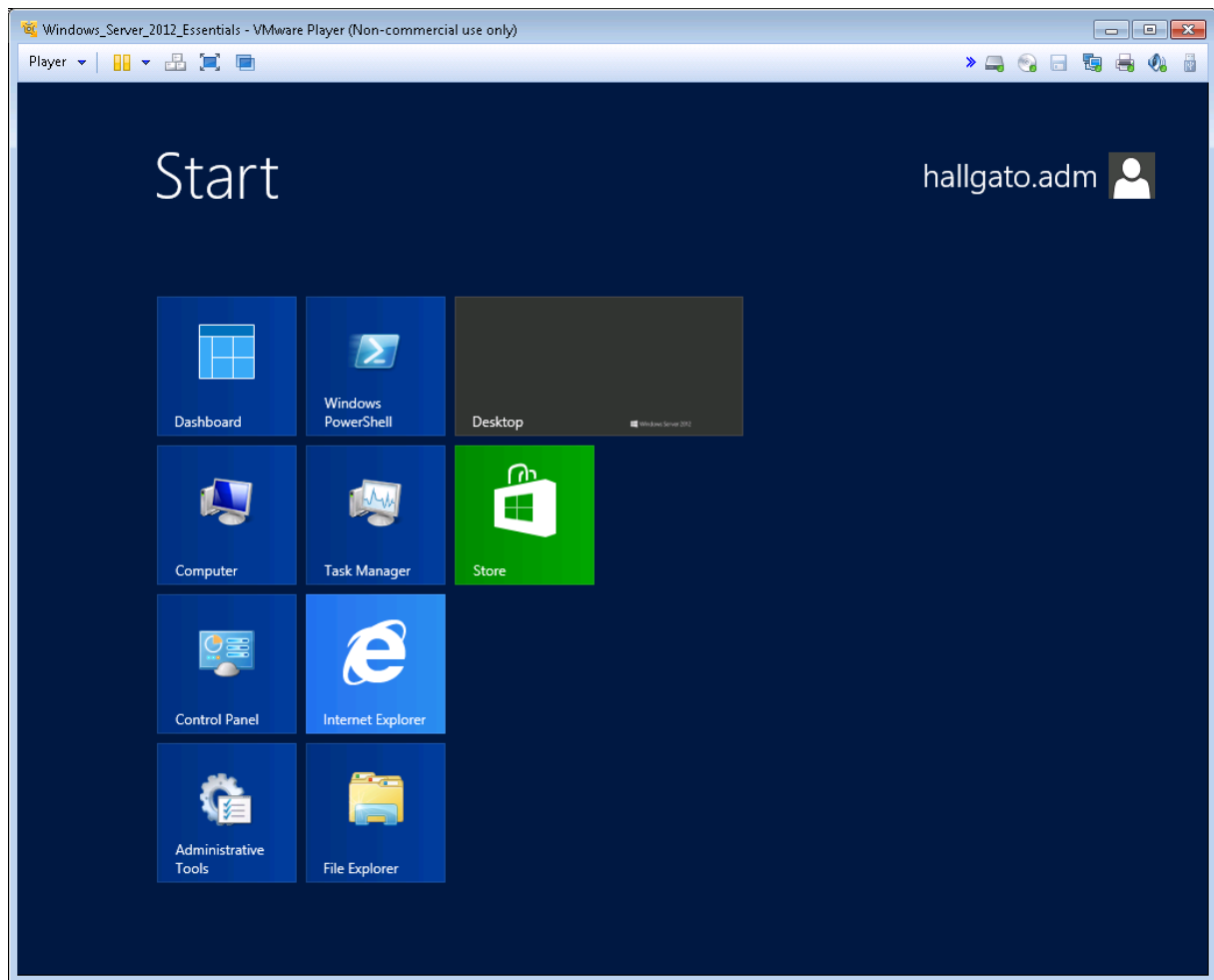
Two accounts were created:

Server administrator account: `hallgato.adm`

Standard user account: `hallgato.std`

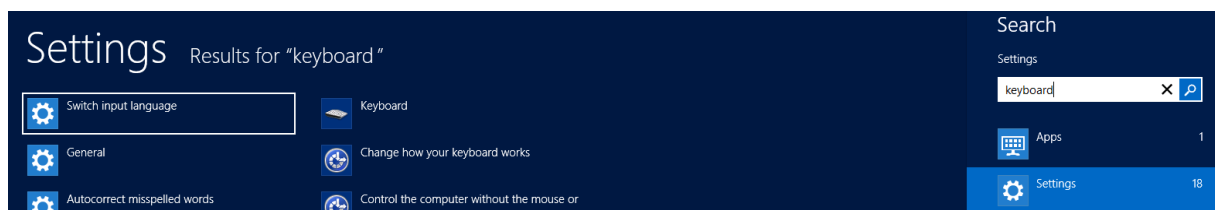
[How do I connect my computer to the network?](#)

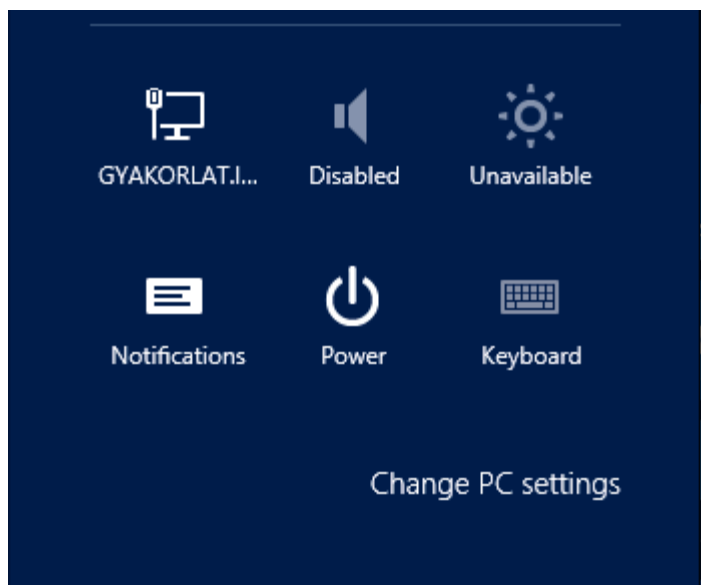
Close



Magyar billentyűzet beállítása

Win+F





- General
- Privacy
- Devices

On 

Language

Add or change input methods, keyboard layouts, and languages.
[Language preferences](#)

Change your language preferences

Add languages you want to use to this list. The language at the top of your list is your primary language (the one you want to see and use most often).

[Add a language](#) [Remove](#) [Move up](#) [Move down](#)

English (United States)	Windows display language: Enabled Keyboard layout: US Date, time, and number formatting	Options
-------------------------	---	-------------------------

Input method

US

[Preview](#) | [Remove](#)

[Add an input method](#)

QWERTZ	Hungarian Touch keyboard layout	Preview
--------	------------------------------------	-------------------------

ENG	English (United States)
US	US keyboard

ENG	English (United States)
HU	Hungarian keyboard

Language preferences

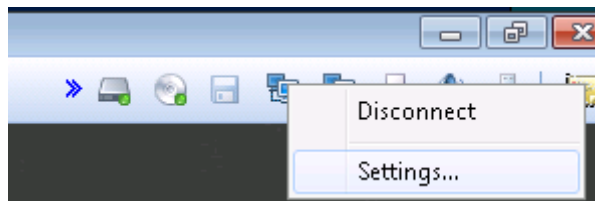
For easy switching, press Windows key + Space

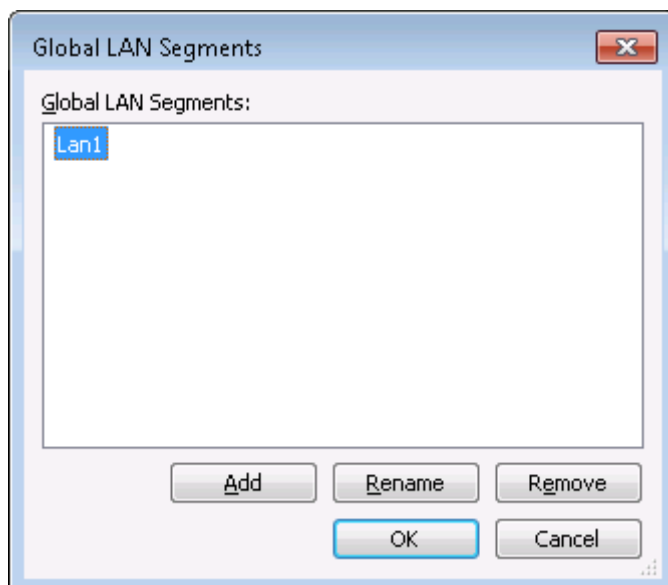
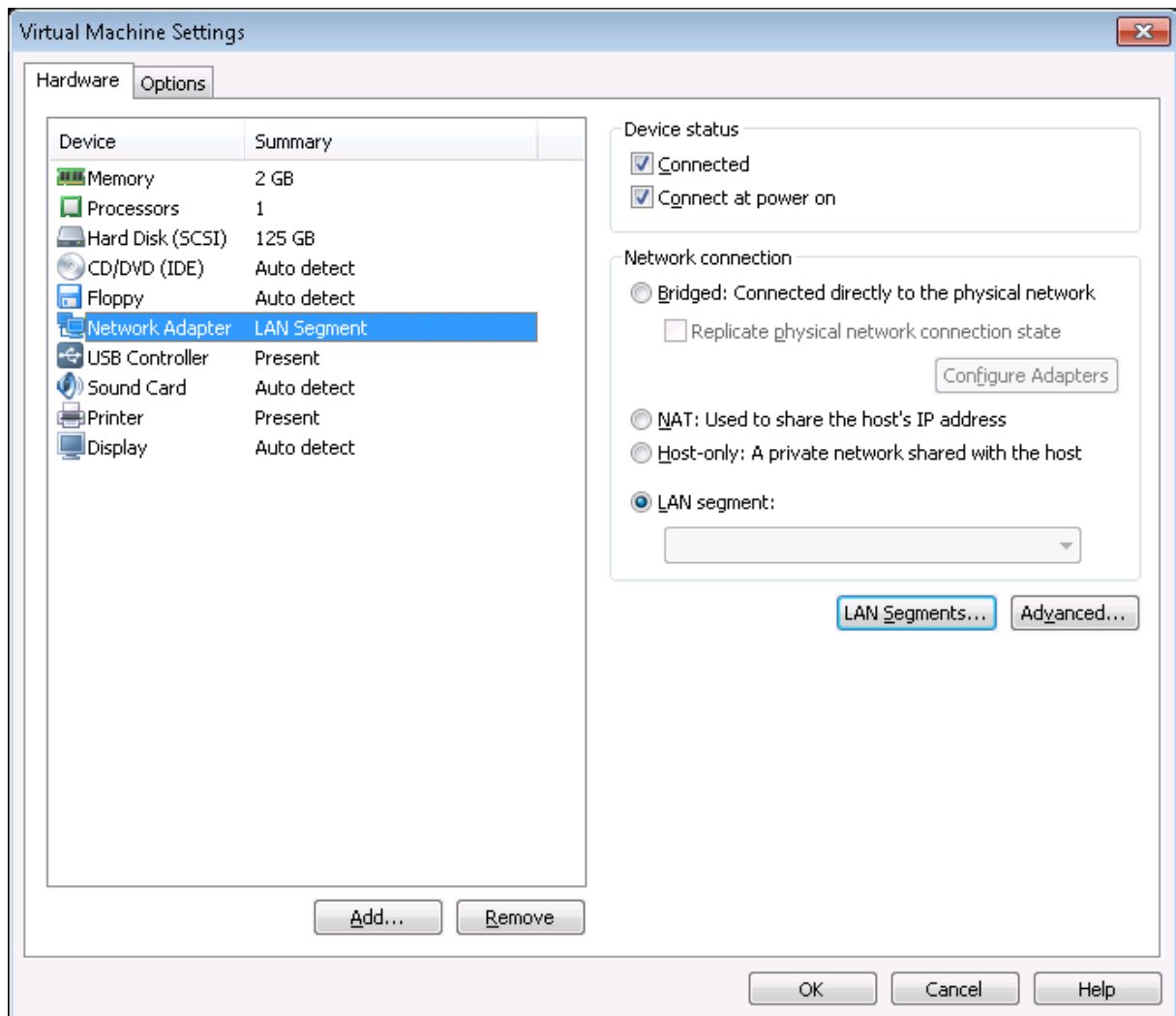


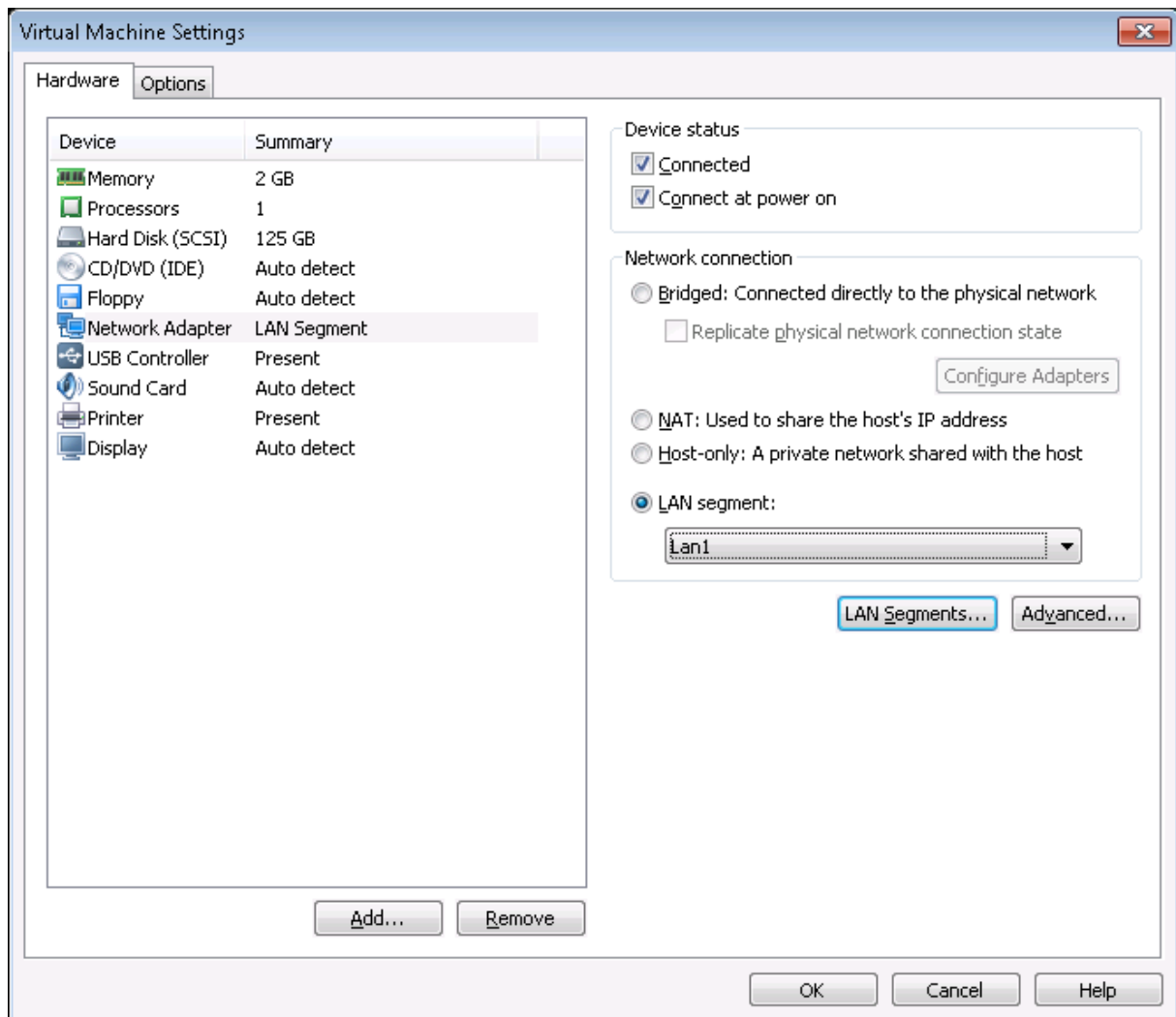
Hálózati beállítások

Virtuális hálózat beállítása

A feladat az, hogy egy virtuális hálózaton (Lan1) lássa egymást a két virtuális gép.



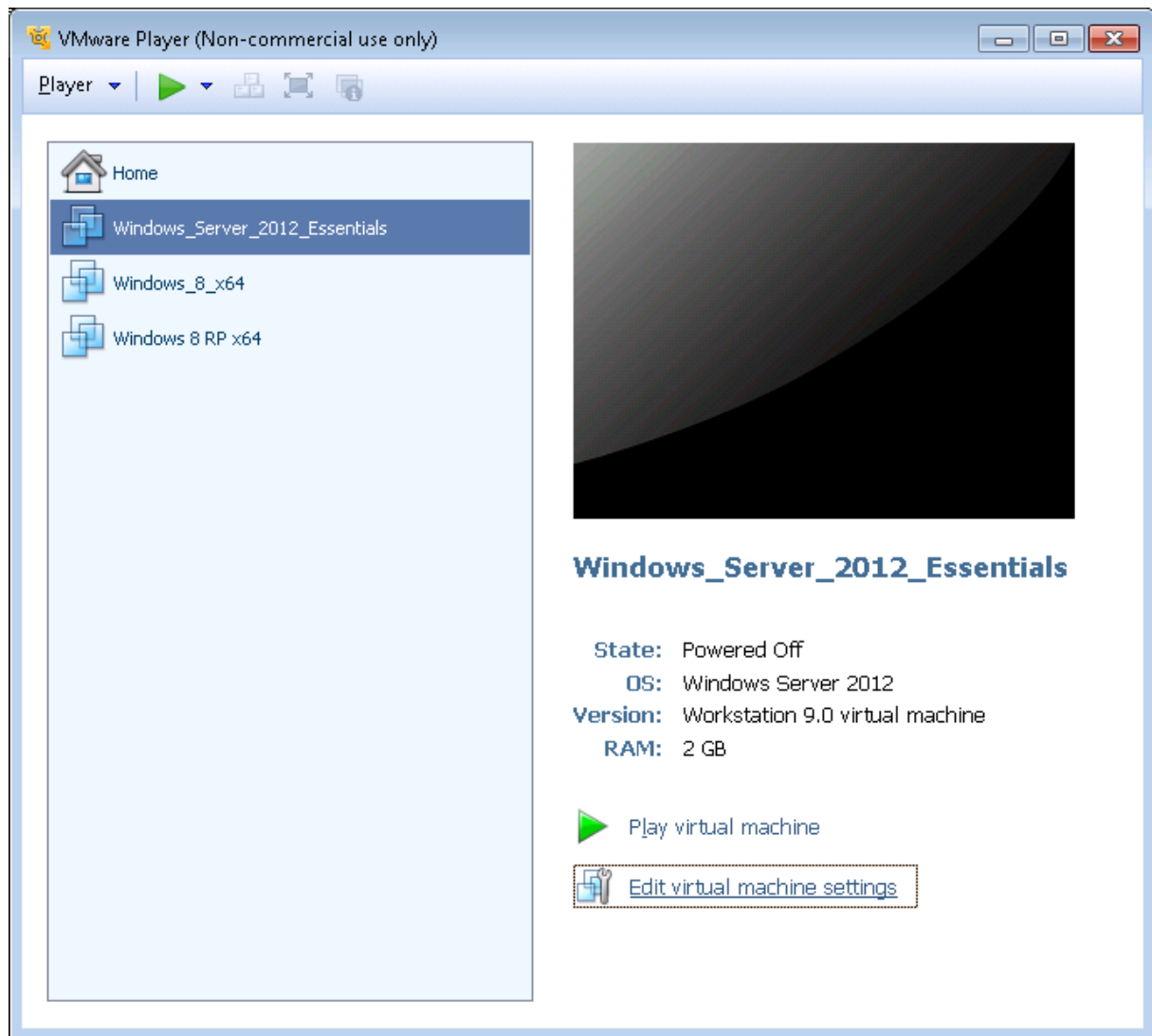


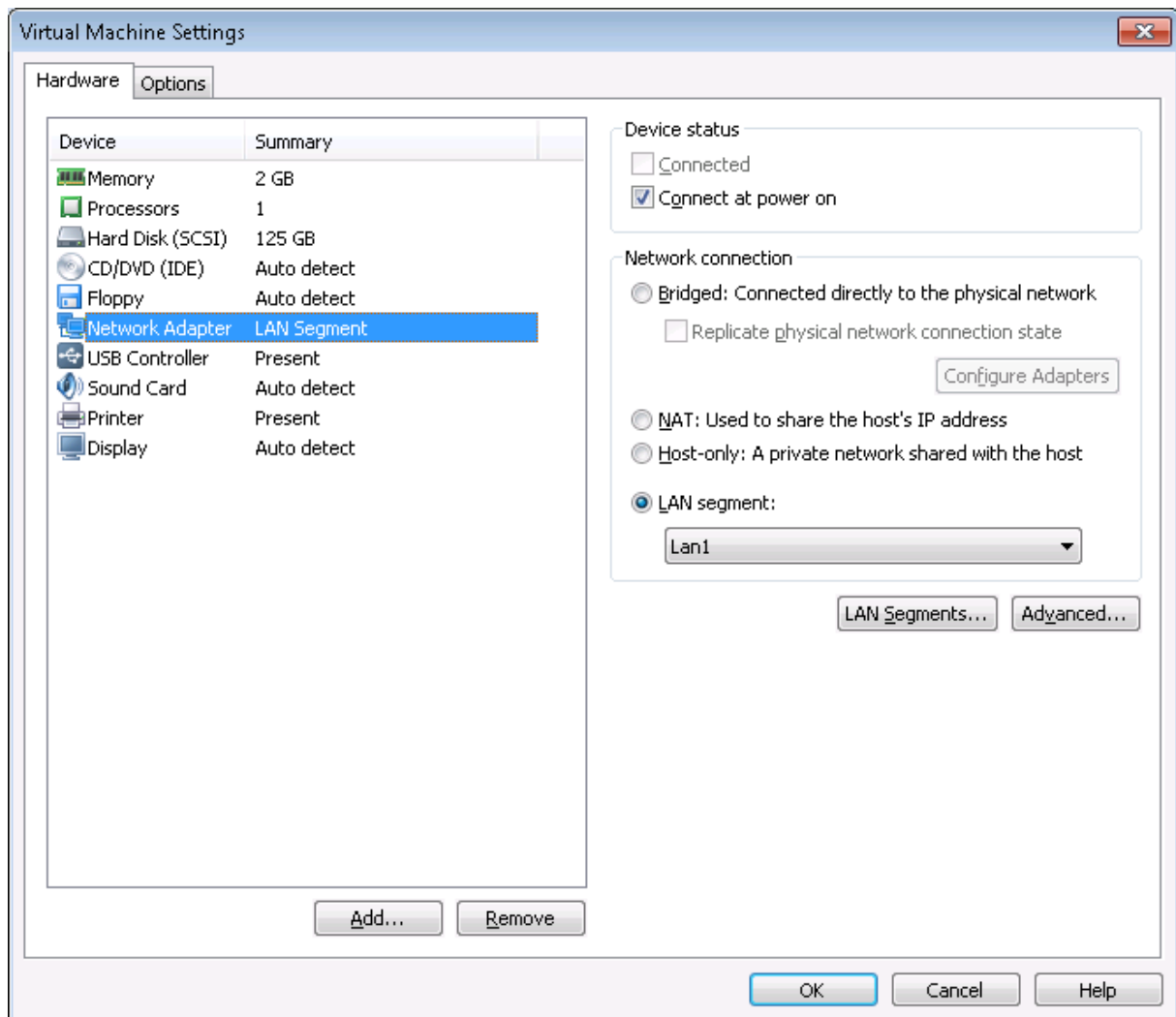


Állítsuk le a W2012-es gépet.

Win+C – Settings – Power – Shut down - Continue

Ellenőrizzük le, hogy a VMware playerben a Lan1 szerepel-e kapcsolatként.



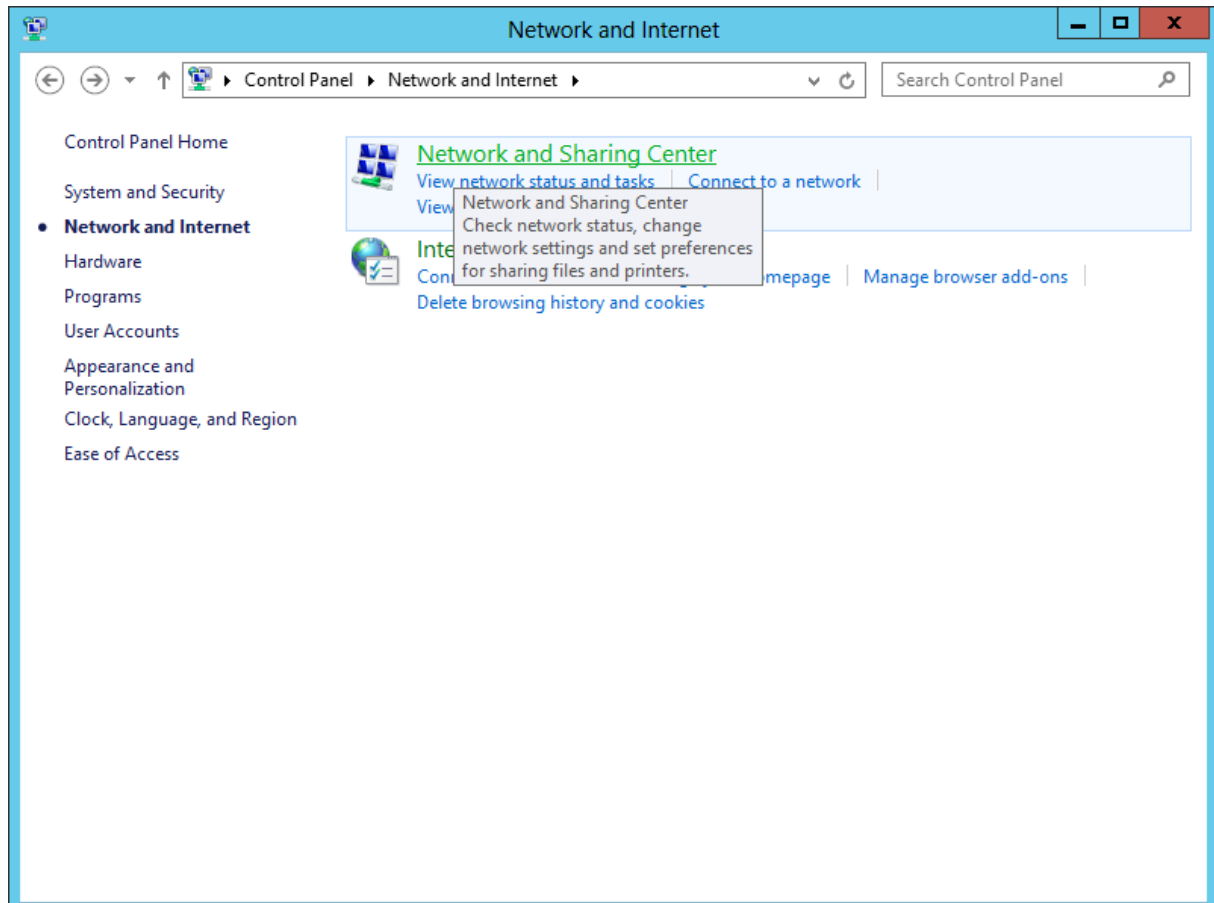
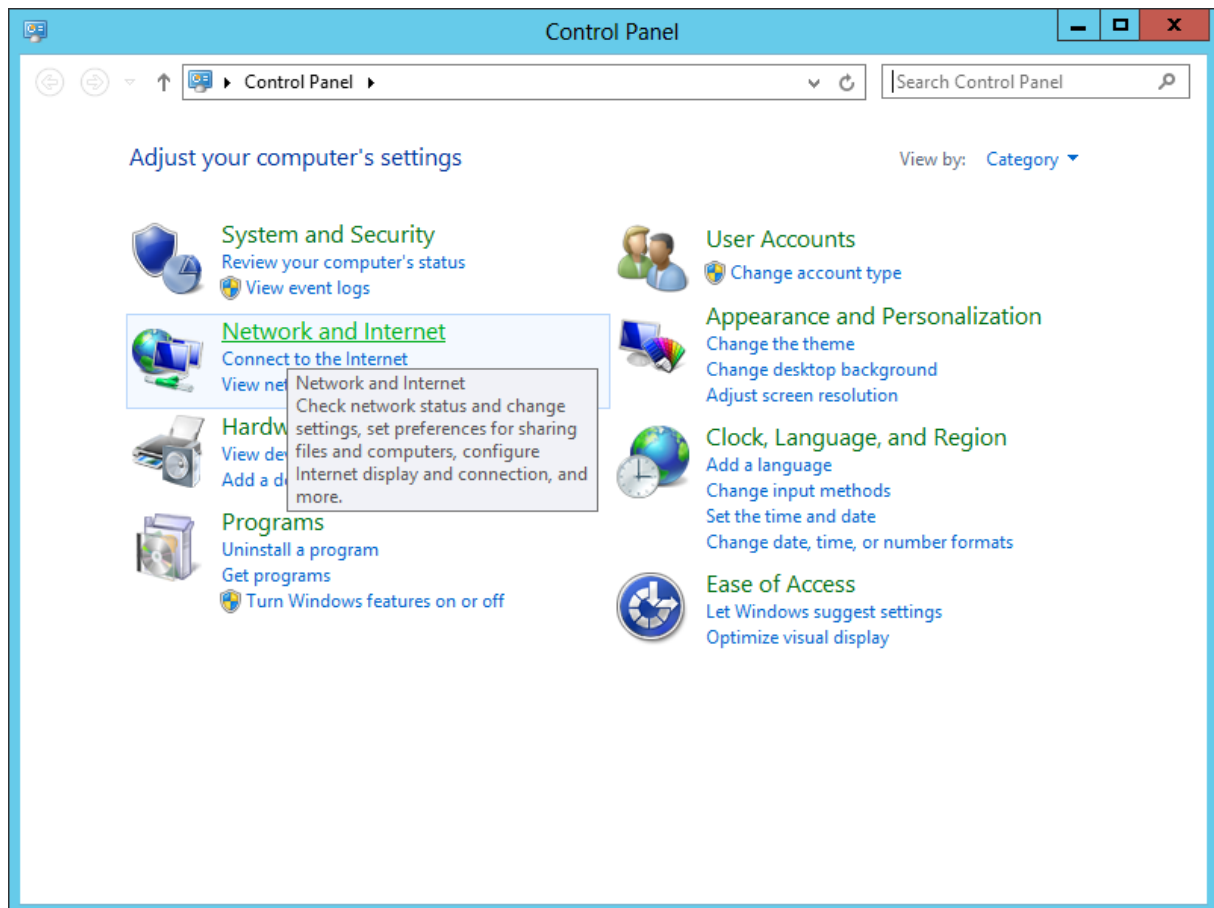


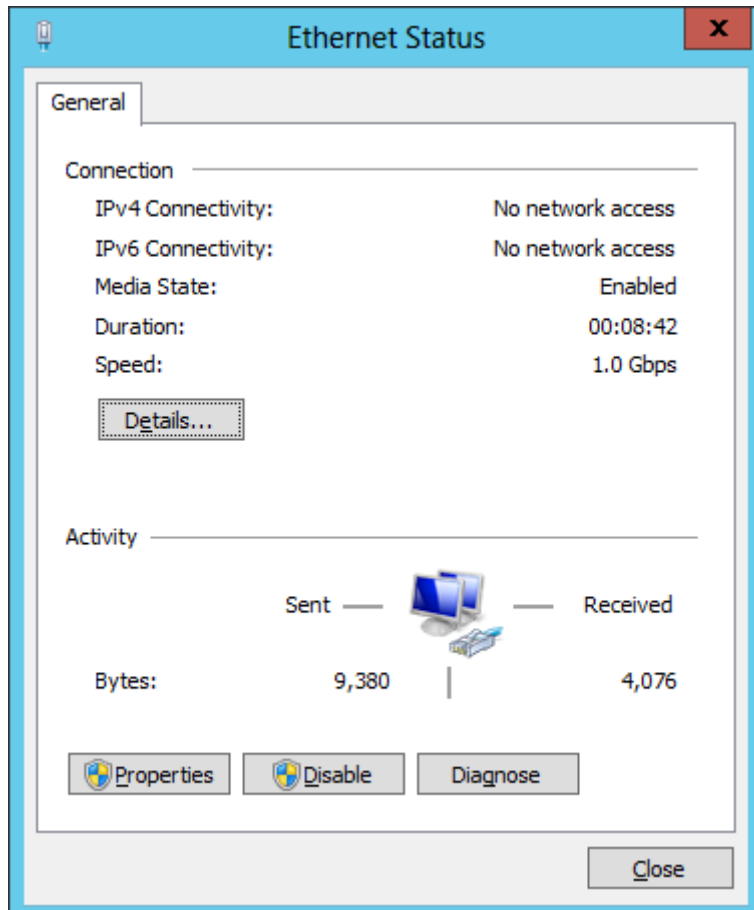
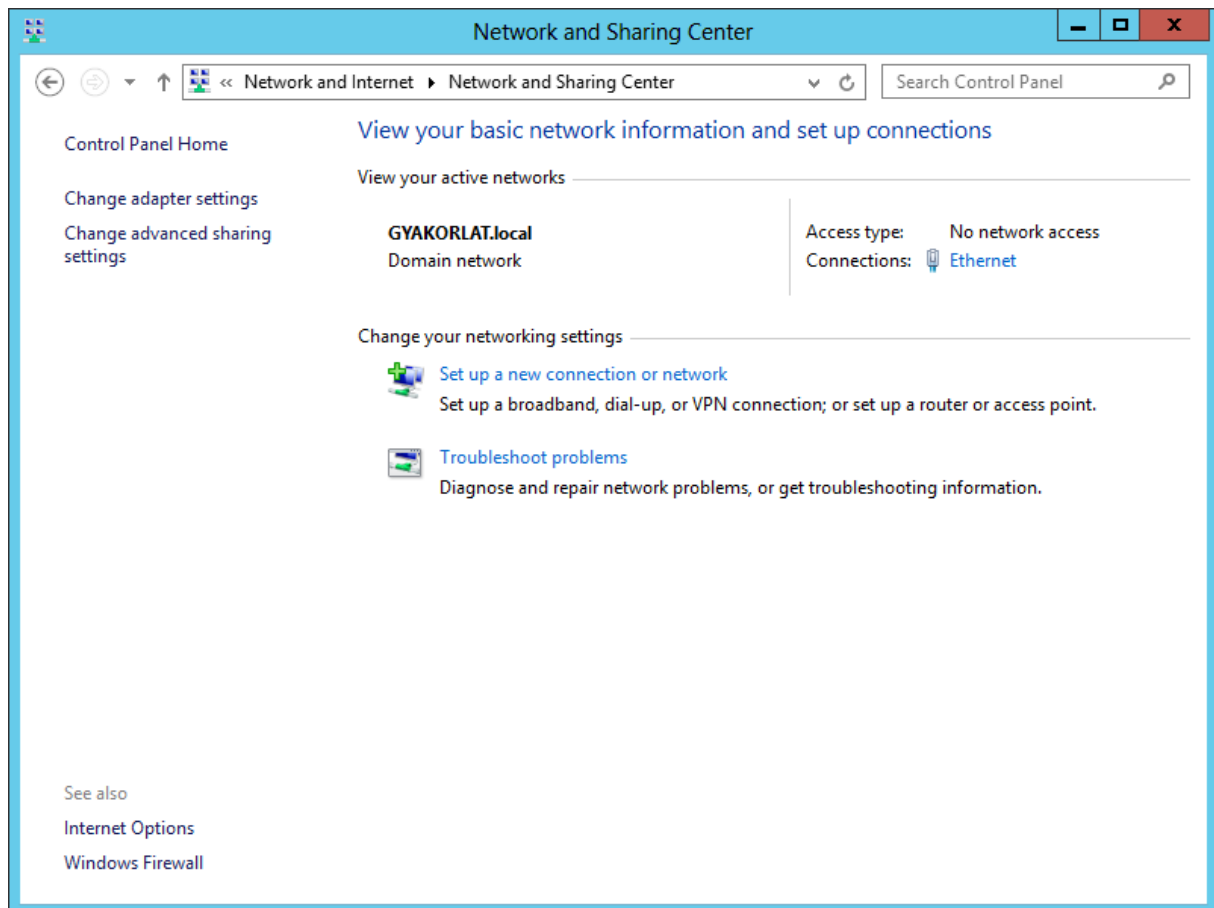
Indítsuk újra a virtuális gépet.

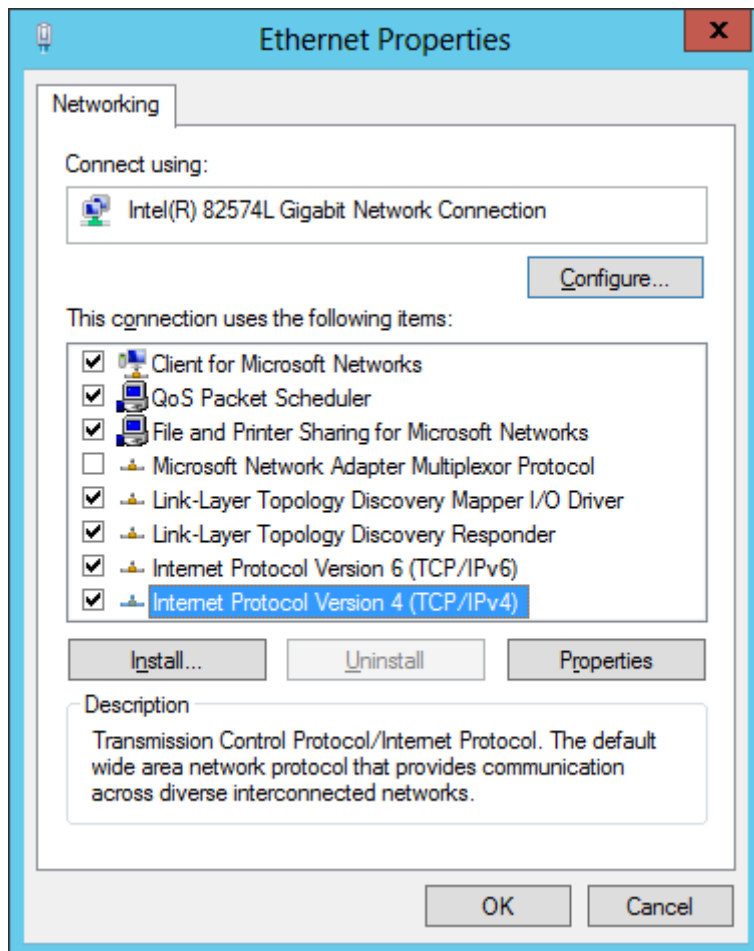
Interfész konfigurálása

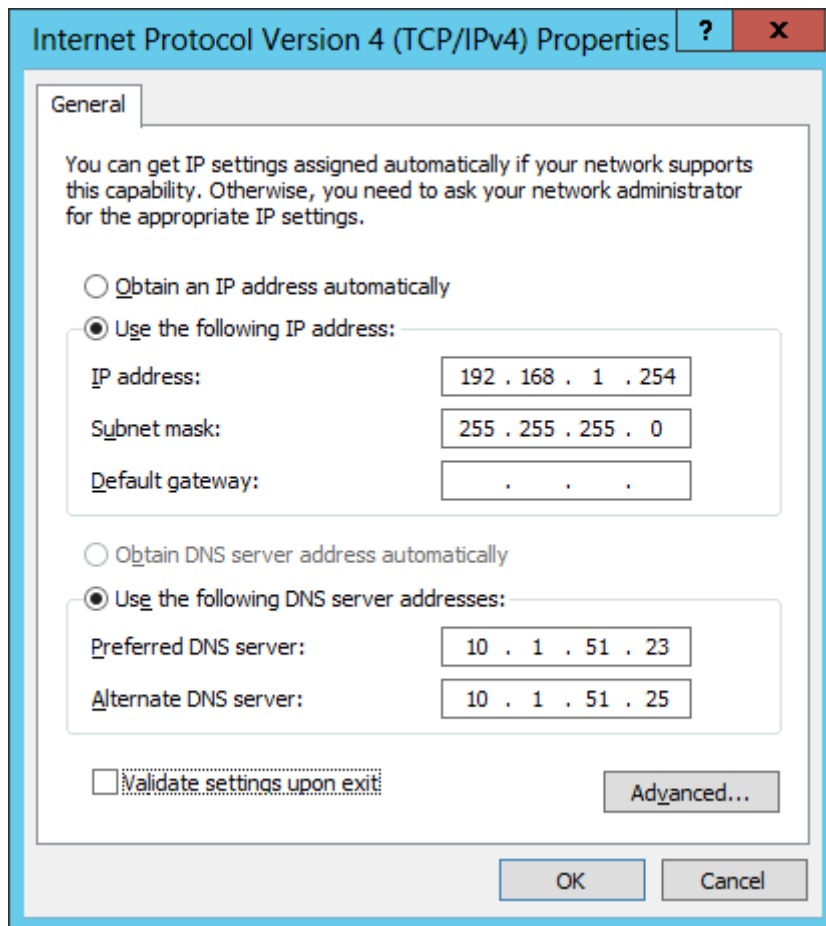
Win

Control Panel

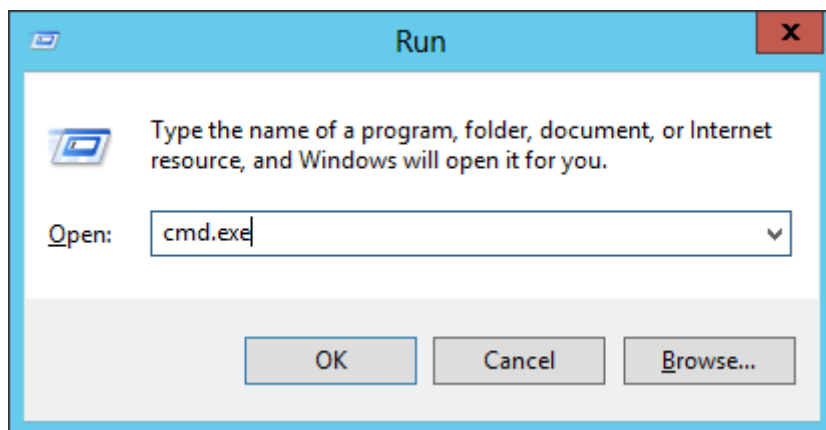


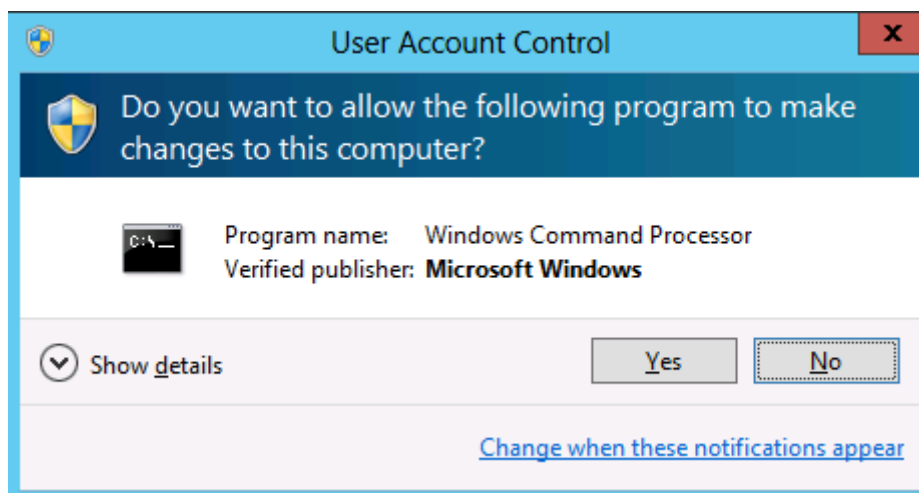
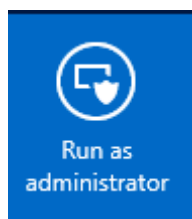






Win+R





Windows Server 2012 Essentials telepítése VMware playerbe	1
Magyar billentyűzet beállítása	17
Hálózati beállítások	19
Virtuális hálózat beállítása.....	19
Interfész konfigurálása	23